



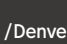

# Brookfield Properties

From Home Shopper to Central Park Denver Homeowner

HELPFUL RESOURCES FOR GETTING FROM HERE TO THERE.



 **Brookfield Properties** 

   /Denver80238  
 /Denver\_80238

Denver80238.com | Info@Denver80238.com  
303.382.1800 | 7351 East 29th Avenue, Denver, CO 80238

Printed on 100% recycled paper. 9/20

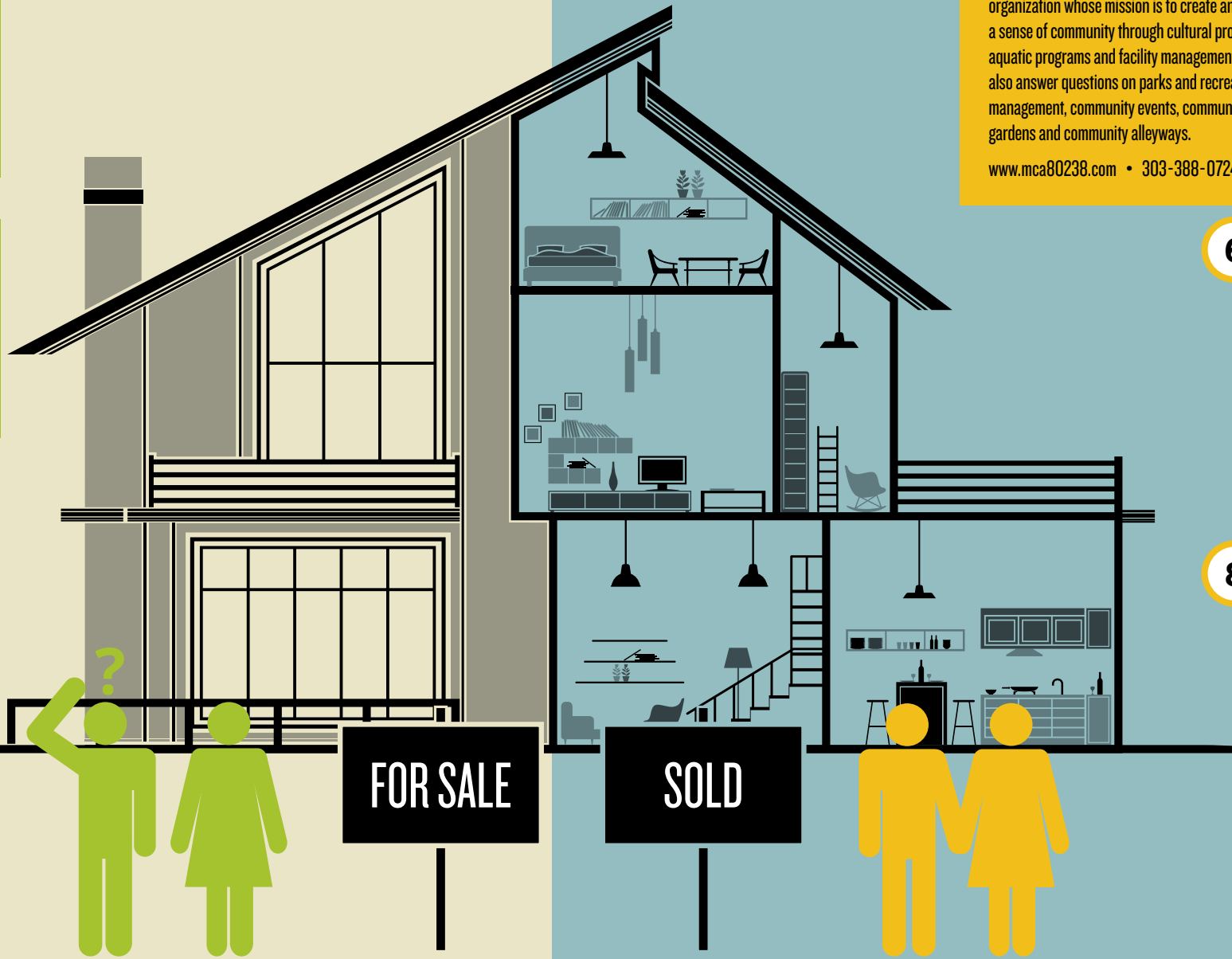
Information and photos are for illustrative purposes and are subject to change without notice at the discretion of Brookfield Properties Development. Brookfield Properties Development makes no promises or representation concerning future development. © 2020 Brookfield Properties Development.



## Resources for the Home Shopper:

**1** **Brookfield Properties Development**  
 Informs multiple audiences about opportunities to live, shop, work and play in Central Park Denver. Sells, prepares and delivers lots to the home builders and third-party commercial developers.  
 303-382-1800  
[www.Denver80238.com](http://www.Denver80238.com)

**2** **Home Builders**  
 Assists buyers in purchasing and building a home. Please contact your home builder for questions on site plans, home warranty, home sites and color palettes.  
[www.Denver80238.com/homes](http://www.Denver80238.com/homes)



## Resources for the Central Park Homeowner:

**3** **Master Community Association (MCA) + The Cube**  
 501(c) 4 nonprofit community development organization whose mission is to create and sustain a sense of community through cultural programming, aquatic programs and facility management. Can also answer questions on parks and recreation management, community events, community gardens and community alleyways.  
[www.mca80238.com](http://www.mca80238.com) • 303-388-0724

**4** **Central Park United Neighbors (CPUN)**  
 Community Involvement: Volunteer-based neighborhood association providing a forum for all Central Park residents to maintain a communication network between Central Park residents, neighboring Denver, Aurora, Commerce City residents, and the respective municipalities. To advocate on issues of importance to the community as a whole. (i.e. development, schools, transportation, safety, diversity, etc.)  
[sites.google.com/site/sunwebsite/](http://sites.google.com/site/sunwebsite/)

**5** **Citizens Advisory Board (CAB)**  
 The Citizens Advisory Board (CAB), which advises SDC, is made up of members (appointed by the Mayor) representing a variety of perspectives and constituencies, including business, neighborhood and professional associations.  
[www.sdcdenver.org](http://www.sdcdenver.org)

**6** **The Foundation for Sustainable Urban Communities**  
 The mission for The Foundation is to work on the social agenda that underpins the redevelopment plan for Central Park, Denver's former airport. The plan's key principles are environmental responsibility, social equity and economic opportunity.  
[www.fsucommunities.org](http://www.fsucommunities.org) • 303-468-3220

**7** **SDC**  
 Manages and maintains the property previously operated as an airport; identifies and implements the plan for disposition of the property; and establishes other programs and organizations required to facilitate the disposition and development of the property consistent with the Central Park Development Plan.  
[www.sdcdenver.org](http://www.sdcdenver.org)

**8** **Municipalities**  
**8A**  
**City and County of Denver | 80238**  
 Manages various amenities within Central Park, such as the Central Park Recreation Center, Sam Gary Library, regional parks (such as Central Park) and open spaces (such as Westerly Creek) and more. Also your resource for animal control, noise control, abandoned cars and street maintenance.  
[www.denvergov.org](http://www.denvergov.org)  
 Call 311  
 Denver Police District 5: 720-913-2000  
 Denver Fire Department Station 26: 720-913-3473  
 Denver Fire Department Station 39: 720-913-3474  
*Note: For non-emergencies*  
*Dial 911 for emergencies*  
**8B**  
**City of Aurora | 80010**  
 Your resource for animal control, noise control, abandoned cars and street maintenance.  
[www.auroragov.org](http://www.auroragov.org)  
 Aurora Police Department: 303-739-6000  
 Aurora Fire Department: 303-326-8999  
*Note: For non-emergencies*  
 Commerce City Police Department: 303-288-1535  
 Dick's Sporting Goods Park Noise Hotline: 303-727-3777  
*Note: For non-emergencies*  
*For questions related to the jurisdiction of Commerce City visit [www.c3gov.com](http://www.c3gov.com)*

**9** **School Districts**  
**Denver Public Schools | 80238**  
 Visit [www.dpsk12.org](http://www.dpsk12.org) for neighborhood school choices, the list of all Denver Public Schools, enrollment guides and more about selecting from a list of school options.  
**Aurora Public Schools | 80010**  
 Visit [www.aurorak12.org](http://www.aurorak12.org) for neighborhood school information and enrollment guides.  
 (APS students can attempt to choice into DPS, spot isn't guaranteed.)

**10** **Nearby Facilities**  
**Dicks Sporting Goods Park**  
[www.dickssportinggoodspark.com](http://www.dickssportinggoodspark.com)  
 303-727-3500  
**Rocky Mountain Arsenal National Wildlife Refuge**  
[www.fws.gov/refuge/rocky\\_mountain\\_arsenal](http://www.fws.gov/refuge/rocky_mountain_arsenal)  
 303-289-0930

**11** **Regional Transportation District (RTD)**  
 Bus, light rail and commuter rail service to Denver, Aurora, Boulder and surrounding cities in Colorado. Visit the website for station information, route maps, schedules and fare options.  
[www.rtd-denver.com](http://www.rtd-denver.com)

**12** **Other Resources**  
**I2A: Property Tax Calculation**  
 Denver 80238: [www.denvergov.org](http://www.denvergov.org)  
 Aurora 80010: [co.arapahoe.co.us](http://co.arapahoe.co.us)  
**I2B: Denver Neighborhood Mediation**  
[www.findsolutions.org](http://www.findsolutions.org)

**13** **Utility Service Providers**

Xcel Energy	Electric Service	800-895-4999
Comcast	Residential Services	<a href="http://www.comcast.com">www.comcast.com</a>
CenturyLink	Residential Services	<a href="http://www.centurylink.com">www.centurylink.com</a>
<b>Denver   80238</b>		
Denver Water	Water Service	303-628-6000
Montbello Post Office	Mail Delivery and Management	303-371-8783
Denver Recycles	Recycling Service	311
Solid Waste Management	Trash Service	311
<b>Aurora   80010</b>		
Aurora Water	Water Service	303-739-7388
Aurora Post Office	Mail Delivery and Management	303-366-1330
Waste Management*	Trash & Recycling Service	303-797-1600

\* Residential trash and recycling pick-up is not a city-provided service. It is the responsibility of the individual residents to arrange for service with one of the city's permitted trash and recycling haulers.  
 Visit [www.auroragov.org/residents](http://www.auroragov.org/residents) for more information.

## Who can answer questions on:

- Range of homes available in Central Park: **1 2**
- Community events: **1 3 8**
- Neighborhoods within Central Park: **1 2**
- Neighborhood Block Captains: **4**
- Builder home site locations: **1 2**
- Exterior colors for new homes: **2**
- Design review of exterior additions and remodels: **3**
- Builder home warranty: **2**
- Large parks and open space event reservations: **8A**
- Pocket parks, community gardens, pools and park facility rentals \*Including the 25 acre park along 26th Avenue in Aurora: **3**
- Neighbor conflicts: **12B**
- School options: **9**
- Street maintenance: **8**
- Alley maintenance: **3**
- Pool passes: **3**
- Sub-HOA vs. Master HOA: **2 3**
- Community event space: **3**
- Future school development: **9**
- Future park development: **1**
- Future retail development: **1**
- Future commercial development: **1**
- Bus stops in Central Park Denver: **11**
- Commuter Rail Station Denver: **11**
- Income-restricted Affordable Homes Program: **1 2 8A**